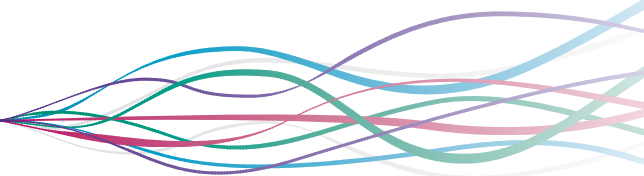


BLACKWELL ADVENTURE



CORPORATE PACKAGES 2012



TASTER ACTIVITIES

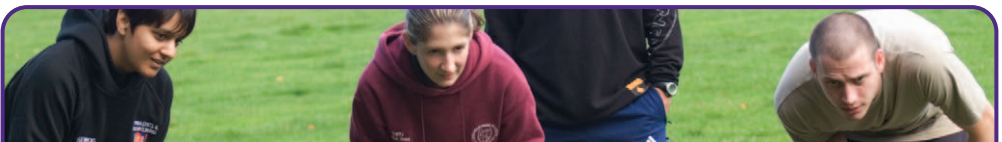
- Fun activities for you all to enjoy
- Three hours with bases to suit you
- Great value for money
- Memorable experience for you as a group

PER PERSON

£ 28.00 INC VAT

£ 23.34 EX VAT

PLUS CATERING OPTIONS, AS OVERLEAF



OUTDOOR FUN 'N' FISH & CHIPS

- Come and enjoy a memorable time with your colleagues
- Three hours of fun activities to suit you
- Great value for businesses and friends on a budget
- Includes a classic fish and chip lunch

PER PERSON

£ 37.00 INC VAT

£ 30.84 EX VAT

Blackwell Adventure Blackwell Court Agmore Road Blackwell Bromsgrove B60 1PX
tel 0121 445 1285 email info@blackwelladventure.co.uk web www.blackwelladventure.co.uk

Blackwell Adventure is a charitable company, limited by guarantee, owned by the Scout Association County of Birmingham. Registered in England number 1534697.



CORPORATE ADVENTURE & TRAINING PACKAGES

CORPORATE ADVENTURE 'INSIDE OUT' DAY

- This includes a half day indoors using one of our rooms for your own meeting, then half a day outside on our adventurous activities
- Ideal for complimenting business meetings alongside light hearted activities
- This package puts the theory of team work and other learning skills into practice

PER PERSON

£ 53.00 INC VAT £ 44.17 EX VAT

PLUS CATERING OPTIONS, AS OVERLEAF

CORPORATE ADVENTURE FULL DAY

- The day is designed to compliment any outcomes you are looking for such as encouraging effective team work, time management, leadership skills plus much more
- Includes 5 to 6 hours of various activities
- Activities are chosen to ensure all participants of any ability feel comfortable and not excluded

PER PERSON

£ 65.00 INC VAT £ 54.17 EX VAT

PLUS CATERING OPTIONS, AS OVERLEAF

CORPORATE BESPOKE PACKAGE

- If your idea does not fit into the above set criteria then we can tailor the package to meet your needs
- If your event is over more than one day or you may prefer alternative times such as evening activities
- Alternative food options available such as themed cuisine evenings or BBQ's
- Quotes and programmes on request

PER PERSON

PRICE ON REQUEST

CATERING OPTIONS

BUFFET LUNCH *	£ 10.00
TEA & COFFEE	£ 3.00
EVENING / HOT MEALS *	FROM £ 15.00

* INCLUDES REFRESHMENTS

ALL PRICES - PER PERSON