



BIRMINGHAM SCOUTS 2011 PRICES

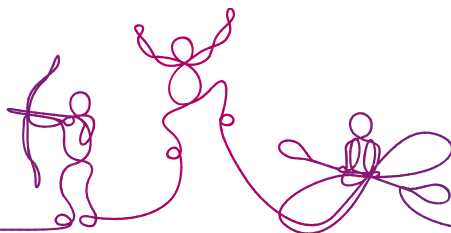
HOW TO MAKE YOUR BOOKING

Call us on **0121 445 1285** or e-mail **info@blackwelladventure.co.uk** to check availability of accommodation and activities and make your initial enquiry. We will need to know a contact name, address and the approximate numbers you will be bringing.

Once you have received your provisional booking information from us please return the form, duly signed, with the appropriate deposit.

Once the deposit is returned we will confirm all your details and forward the information pack and programme relevant to your party. Please see terms and conditions for more details on when the final payment will need to be received by us.

If you have any queries one of our customer service team will be more than happy to answer any questions you may have and give guidance and help with your booking.



BLACKWELL ADVENTURE

ACTIVITIES 2011

FREE OF CHARGE

ORIENTEERING
OBSTACLE COURSE
CAMP FIRE

SELF LED

PIONEERING EQUIPMENT
NIGHT LINE

£25.00 PER 3 HOURS AT PIKES POOL

RIFLE RANGE BRING YOUR OWN RIFLES
HIRE ONE END OF PIKES POOL FOR WATER ACTIVITIES

SELF LED

£27.00 PER HOUR

ARCHERY
TEAM CHALLENGE

PEDAL KARTS
GRASS SLEDS

SELF LED

£38.00 PER HOUR

OUTDOOR CLIMB
ABSEIL

SWIMMING POOL - max 30
INDOOR CLIMB

SELF LED

£53.00 PER 3 HOURS AT PIKES POOL

RAFT BUILDING INCLUDING POOL HIRE
RIFLE RANGE INCLUDING RIFLES

SELF LED

£38.00 PER HOUR

ARCHERY
TEAM CHALLENGE
PEDAL KARTS

ORIENTEERING
GRASS SLEDS

INSTRUCTED

£45.00 PER HOUR

NEW!! TREE TREK
3G SWING
TRAPEZE
MULTI SCRAMBLE
CLIMBING - INDOOR
ABSEILING

ZIP WIRES
CRATE STACK
GIANTS LADDER
HIGH ALL ABOARD
CLIMBING - OUTDOOR
SWIMMING POOL - max 30

INSTRUCTED

£100.00 PER 3 HOURS AT PIKES POOL

KAYAKING

RAFT BUILDING

INSTRUCTED

MINIMUM 8 AND MAXIMUM 12 PARTICIPANTS PER ACTIVITY EXCEPT WHERE SPECIFIED.

FACILITIES 2011

CAMPING

PER PERSON, BLACKWELL
PER PERSON, PIKES POOL

per night
£ 2.20
£ 2.20

DAY VISITOR

PER PERSON

per day
£ 1.50

TENTED VILLAGES

Purpose built tented area with solid floors and traditional beds. Available throughout the camping season. This will save you the time, effort and additional transport of bringing your own camping gear and the need to dry out wet canvas on you return home!

Turner Tented Village - Minimum 24, Maximum 58 persons

Brooks Tented Village - Minimum 16, Maximum 30 persons

PER PERSON

per night
£ 7.00

PIKES POOL CENTRE

DAY USE
OVERNIGHT USE

Minimum 10 persons Per person
£ 3.00
£ 4.00

STABLE BLOCK

PER PERSON

Minimum 16, Maximum 28 persons Per night
£ 8.10

MANOR HOUSE

PER PERSON
BED LINEN, PER PERSON

Minimum 24, Maximum 49 persons Per night
£ 16.00
£ 5.00

INDOOR FACILITIES

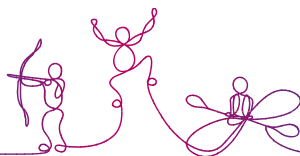
GROUP ROOM Maximum capacity - 100
SPORTS HALL Maximum capacity - 100 when not being used for sport

per day
£ 66.00
£ 66.00

OTHER EQUIPMENT SUCH AS MESS TENTS AND MARQUEES ARE ALSO AVAILABLE. PLEASE CONTACT US FOR MORE DETAILS.

PLEASE CHECK OUT OUR WEBSITE WWW.BLACKWELLADVENTURE.CO.UK FOR NEW ACTIVITY INFORMATION AND UPDATES!

ALL PRICES FOR FACILITIES AND ACTIVITIES INCLUDE VAT AT JANUARY 2011 RATE. THIS MAY BE SUBJECT TO CHANGE.





CONDITIONS OF BOOKING

On booking we will send you a confirmation letter and a conditions of booking form, which you will need to return to us within 14 days. This will secure your booking.

We will ask for a 20% deposit to be paid with the time scales on your confirmation letter.

Numbers can be altered at any time up to six weeks before your booking. After this date the full balance will be due for payment based on your confirmed numbers.

Blackwell Adventure reserves the right to cancel or move any booking if there are reasons beyond our control.

Individual activity sessions will be charged for a minimum of 10 and residential for a minimum of 16 for the Stable Block and Brooks Village and 24 for the Manor House and Turner Village.

If the numbers are greater we will send out an additional invoice however we must be notified in advance as this can affect group sizes etc.

CANCELLATIONS

Within 4 weeks of event	full fee due
4 - 8 weeks	50% of total amount
8 - 12 weeks	25% of total amount
over 12 weeks	loss of deposit unless we can re-book

Numbers can be changed any time up to six weeks before the event. The final invoice will be issued four weeks before for the full amount.

PAYMENTS

All outstanding payments should be made in full on the day of departure unless separate arrangements have been made.

If paying by cheque, it would be preferable to settle your account by group/ organisation cheque, as we can only accept personal cheques up to the value of the appropriate Bankers Card.

Cheques should be made payable to **Blackwell Adventure**.

We now accept credit card payments.